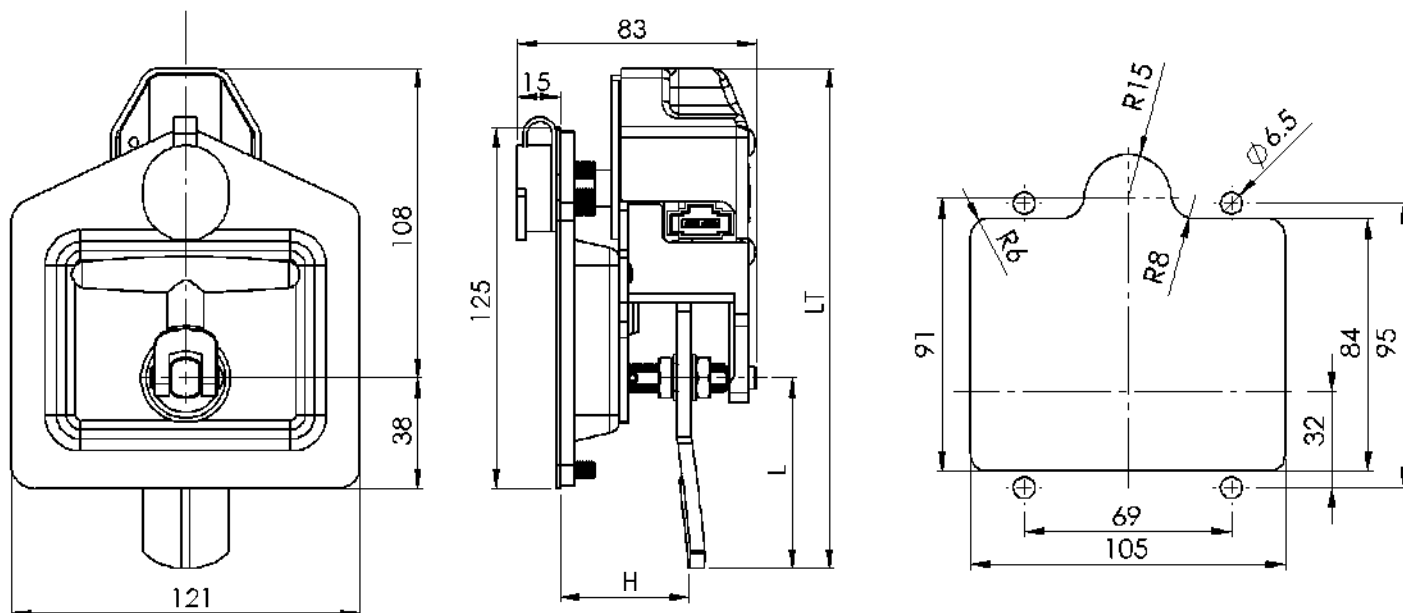


FAST LOCK

FIRST CHOICE IN REMOTE T-HANDLE LOCKING SYSTEMS

www.fastlockinternational.com



- Stainless Steel – Polished Dish
- IP65 Certified – Rain, Dust and Dirt-Proof.
- Integrated Design – Internationally Patented.
- Electric Motor Actuator Multi-volt 12-24V to Locking Mechanism on a Key Barrel.
- Plug and Play Harness to Electric Motor to Attach to Central Locking.
- Plugs are Compatible with Most Aftermarket Central Locking Systems.
- Compact and Durable.
- Quick Installation Without Dismantling The Lock.
- 3 Point locking available, if required.
- Can use key to over-ride manually, if required.
- Concealed Stud Fix security.
- Assembled and Tested in Australia.
- Warranty – 24 Months.

Model Name: FAST LOCK V2

Exterior Color Silver + black

Weight: 900g

Opening Rotation: 90° clockwise

Electrical Rating 4.1A/12V
2A/24V

Protection Level IP65

Operation Temperature -40°C to +80°C

Electric Mechanical life: >30 000 cycles

Maximum panel thickness 4mm

Warranty 24 months

FAST LOCK

ID	Voltage multivolt	Cam	H =	L =	LT
FL-244-1	12-24V	Straight	35-44	66	174
FL-244	12-24V	Bent with offset of 25mm	45-54	78	186

Locks are keyed alike. Different key codes are available.

Please note that FAST LOCK reserves the right to alter designs and dimensions without notice, McNaughtans Pty Ltd

PATENTED

McNAUGHTANS PTY LTD
BUS - TRUCK - TRAILER HARDWARE
Administration and Melbourne Branch
321 Greens Rd
Keysborough,
VIC 3173
Ph : 03 8768 6666
Fax : 03 8768 6600

McNAUGHTANS PTY LTD
BUS - TRUCK - TRAILER HARDWARE
Brisbane
925 Nudgee Road
Banyo,
QLD 4014
Ph: 07 32677722
Fax: 07 32677722

McNAUGHTANS PTY LTD
BUS - TRUCK - TRAILER HARDWARE
Sydney
2/314 Hoxton Park Rd
Prestons,
NSW 2170
Ph: 02 96095122
Fax: 02 96095122

McNAUGHTANS PTY LTD
BUS - TRUCK - TRAILER HARDWARE
Perth
3 Kalli Street
Malaga,
WA 6090
Ph: 08 92481833
Fax: 08 92481899

McNAUGHTANS PTY LTD
BUS - TRUCK - TRAILER HARDWARE
Laverton
3/110 Fitzgerald Rd
Laverton North,
VIC 3026
Ph: 03 93698113
Fax: 03 93698113

Concept Latch Lock & Hinge
Brunswick
353 Victoria Street
Brunswick
VIC 3056
Ph: 03 93882551
Fax: 03 93875758

FAST LOCK

FIRST CHOICE IN REMOTE T-HANDLE LOCKING SYSTEMS

www.fastlockinternational.com



What is Fast Lock?

Fast Lock is a recessed drop T lock with an integrated electrically controlled lock/unlock system that can be made to function with the existing vehicle remote central locking system or with an independent central locking module.

Fast Lock Locking System is unique and Internationally Patented. The technology has been tried, tested, and proven as a device that will give peace of mind.

Why Buy Fast Lock?

The Fast Lock Locking System design is very compact and can be installed without disassembling. This makes for a quick and easy fit. The system can usually be retrofitted within the same area of an existing recessed drop T handle.

The Plug and Play componentry is easy to install with a remote central locking system.

(Installation diagrams are shown in the Specification Sheets)

Highlights

- IP65 Certified – Rain, Dust and Dirt-Proof.
- Integrated Design – Internationally Patented.
- Electric Motor Actuator Multi-volt 12-24V to Locking Mechanism on Key Barrel.
- Plug and Play Harness to Electric Motor to Attach to Central Locking.
- Plugs are Compatible with Most Aftermarket Central Locking Systems.
- Compact and Durable.
- Quick Installation Without Dismantling The Lock.
- 3 Point locking available, if required.
- Can use key to over-ride manually, if required.
- Concealed Stud Fix security.
- Assembled and Tested in Australia.
- Warranty – 24 Months.



Where is Fast Lock used?

Trades or Works Vehicles, Trucks, Trailers, Campers, Leisure Vehicles, where multiple compartments for storage are used. In most cases, these vehicles have multiple doors inclusive of canopies on tray backs as used by Carpenters, Builders, Electricians, Handymen, Government Departments, and many other work and leisure uses.

What are the Benefits?

With busy work schedules and meeting demanding timetables, pressures to rush to the next job, can potentially mean that we occasionally miss checking if each door or compartment is locked.

This can result in thousands of dollars of lost or stolen tools and equipment if these units are not properly secured.

Fast Lock Locking System helps you ensure that the risk of these instances occurring is minimised if using the remote central locking function.

Fitting Fast lock

The Fast Lock Locking System is simple and easy to install. Fitting can be performed by a competent “ Do It Yourself “ handyman or a qualified professional.

The Fast Lock Locking System is available to fit a remote central locking system or simply as a standard lock without remote function.


 **McNAUGHTANS** PTY LTD
BUS - TRUCK - TRAILER HARDWARE
Administration and Melbourne Branch
321 Greens Rd
Keysborough,
VIC 3173
Ph : 03 8768 6666
Fax : 03 8768 6600

 **McNAUGHTANS** PTY LTD
BUS - TRUCK - TRAILER HARDWARE
Brisbane
925 Nudgee Road
Banyo,
QLD 4014
Ph: 07 32677722
Fax: 07 32677722

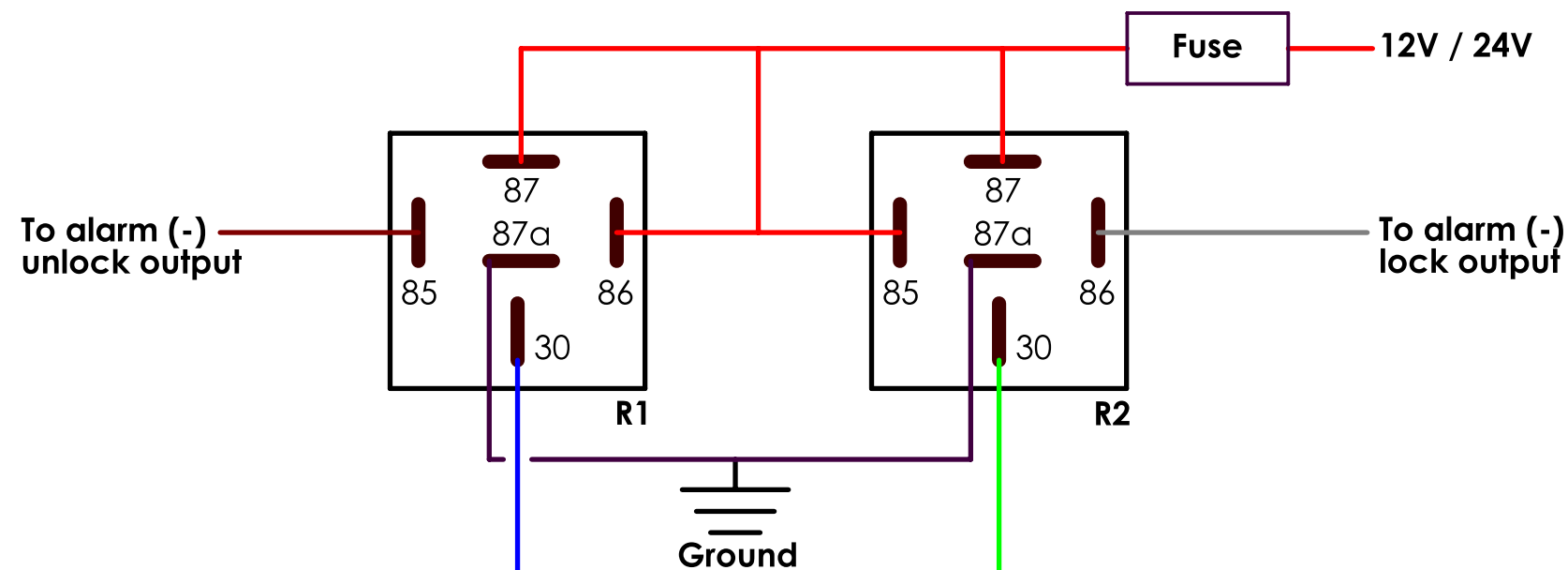
 **McNAUGHTANS** PTY LTD
BUS - TRUCK - TRAILER HARDWARE
Sydney
2/314 Hoxton Park Rd
Prestons,
NSW 2170
Ph: 02 96095122
Fax: 02 96095122

 **McNAUGHTANS** PTY LTD
BUS - TRUCK - TRAILER HARDWARE
Perth
3 Kalli Street
Malaga,
WA 6090
Ph: 08 92481833
Fax: 08 92481899

 **McNAUGHTANS** PTY LTD
BUS - TRUCK - TRAILER HARDWARE
Laverton
3/110 Fitzgerald Rd
Laverton North,
VIC 3026
Ph: 03 93698113
Fax: 03 93698113

 **Concept**
Latch Lock & Hinge
Brunswick
353 Victoria Street
Brunswick
VIC 3056
Ph: 03 93882551
Fax: 03 93875758

In vehicle cabin



SCHEMATIC FOR FAST LOCK V2

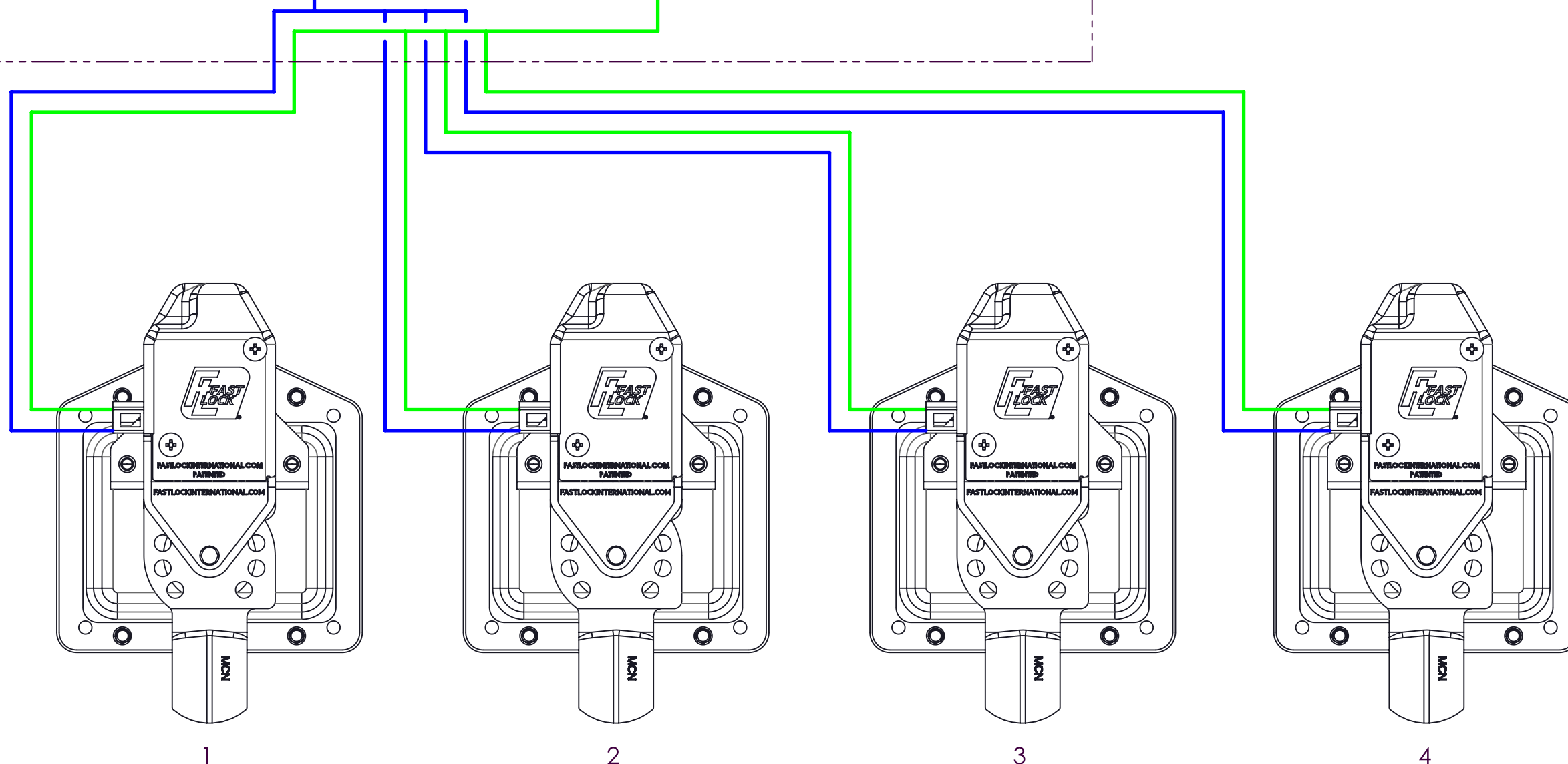
NEGATIVE TRIGGER

VEHICLE SWITCH SENDS A GROUND SIGNAL TO CONTROLLER TO MOVE THE ACTUATORS

Series FL-244 is rated for Multivolt 12 - 24 V.

Key:

- R1 = relay 1
- R2 = relay 2
- 85 = relay coil - switching or control output
- 86 = relay coil - switching or control output
- 87 = relay power circuit output NO (Normally Open)
- 87a = relay power circuit output NC (Normally Closed)
- 30 = relay power circuit input

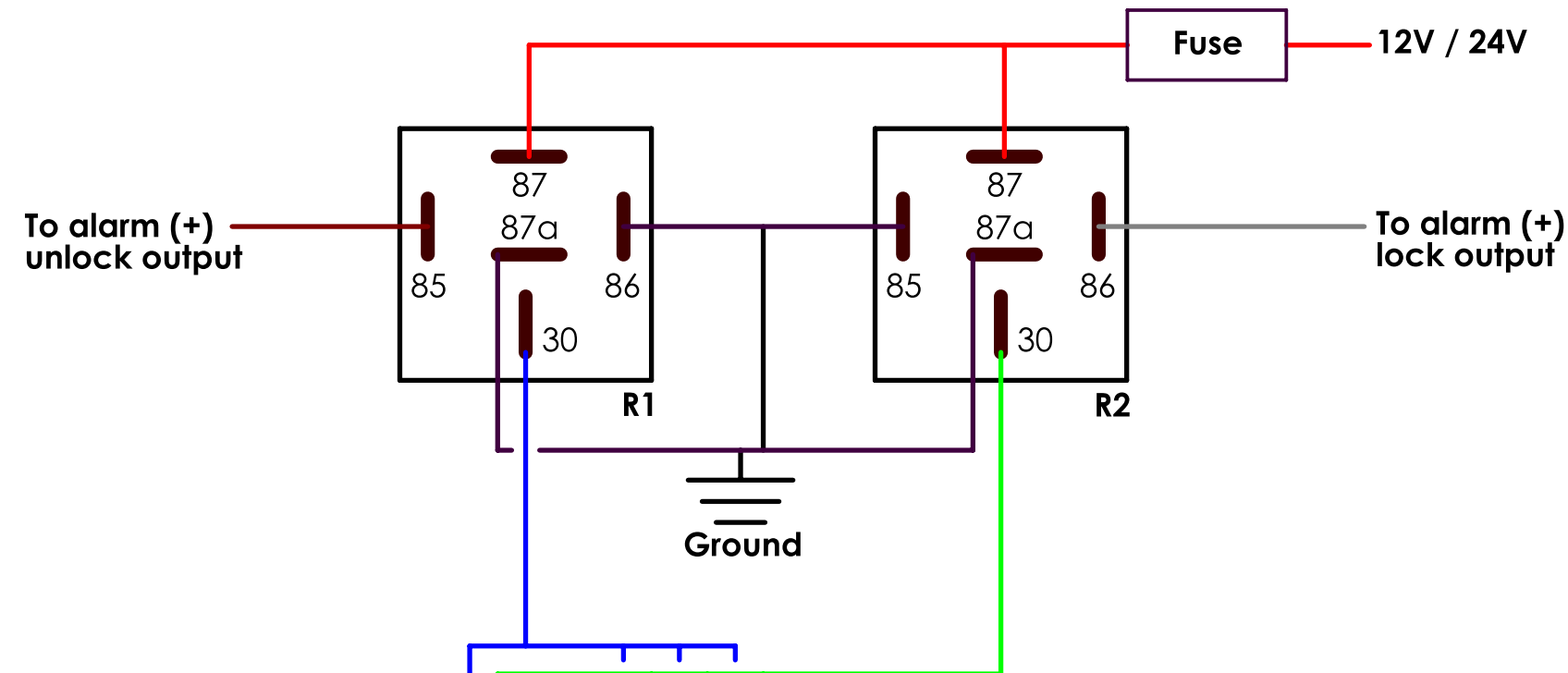


FAST LOCK Wiring

Unlock polarity
Blue wire (+)
Green wire (-)

Lock Polarity
Blue wire (-)
Green wire (+)

In vehicle cabin



SCHEMATIC FOR FAST LOCK V2

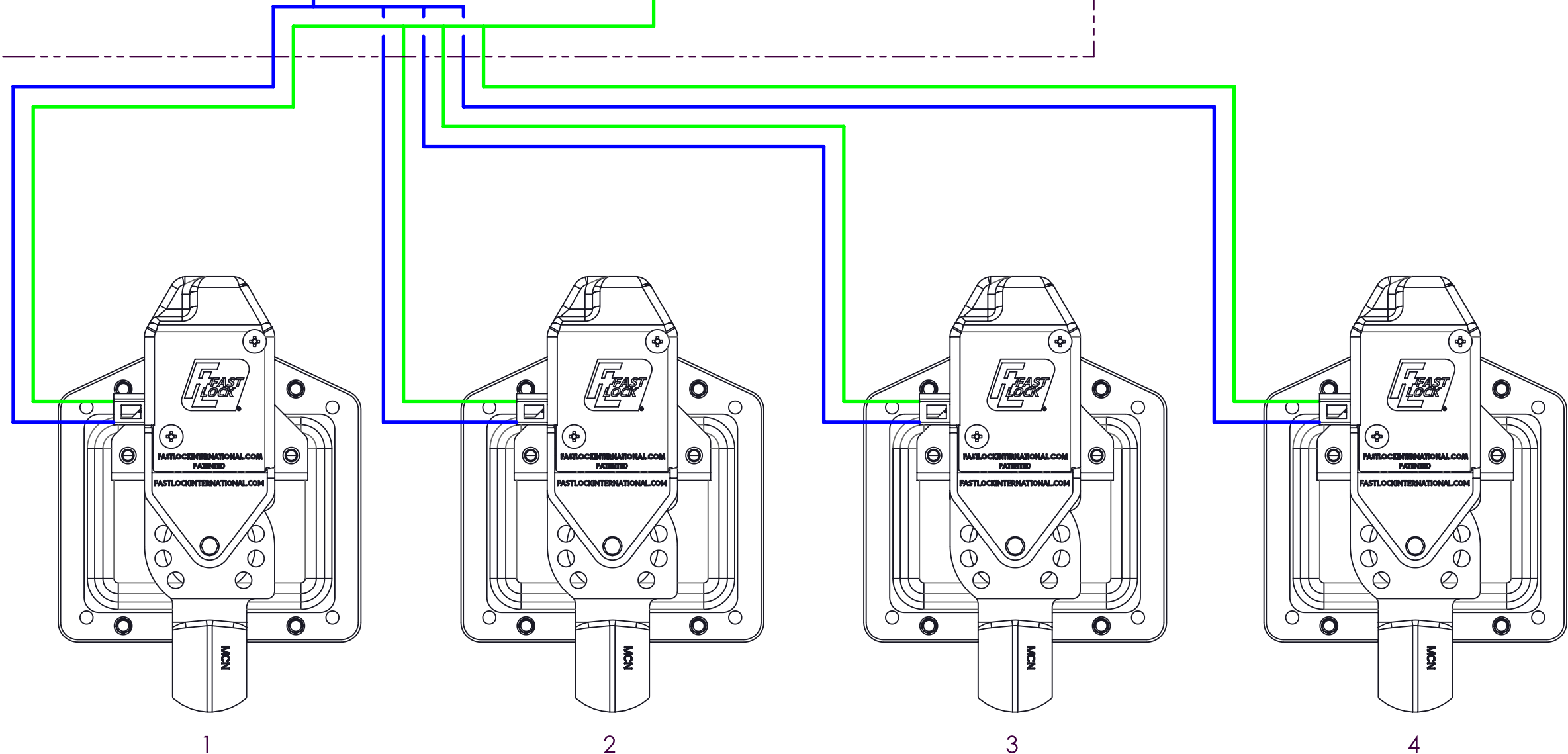
POSITIVE TRIGGER

VEHICLE SWITCH SENDS A POSITIVE SIGNAL TO CONTROLLER TO MOVE THE ACTUATORS

Series FL-244 is rated for Multivolt 12 - 24 V.

Key:

- R1 = relay 1
- R2 = relay 2
- 85 = relay coil - switching or control output
- 86 = relay coil - switching or control output
- 87 = relay power circuit output NO (Normally Open)
- 87a = relay power circuit output NC (Normally Closed)
- 30 = relay power circuit input

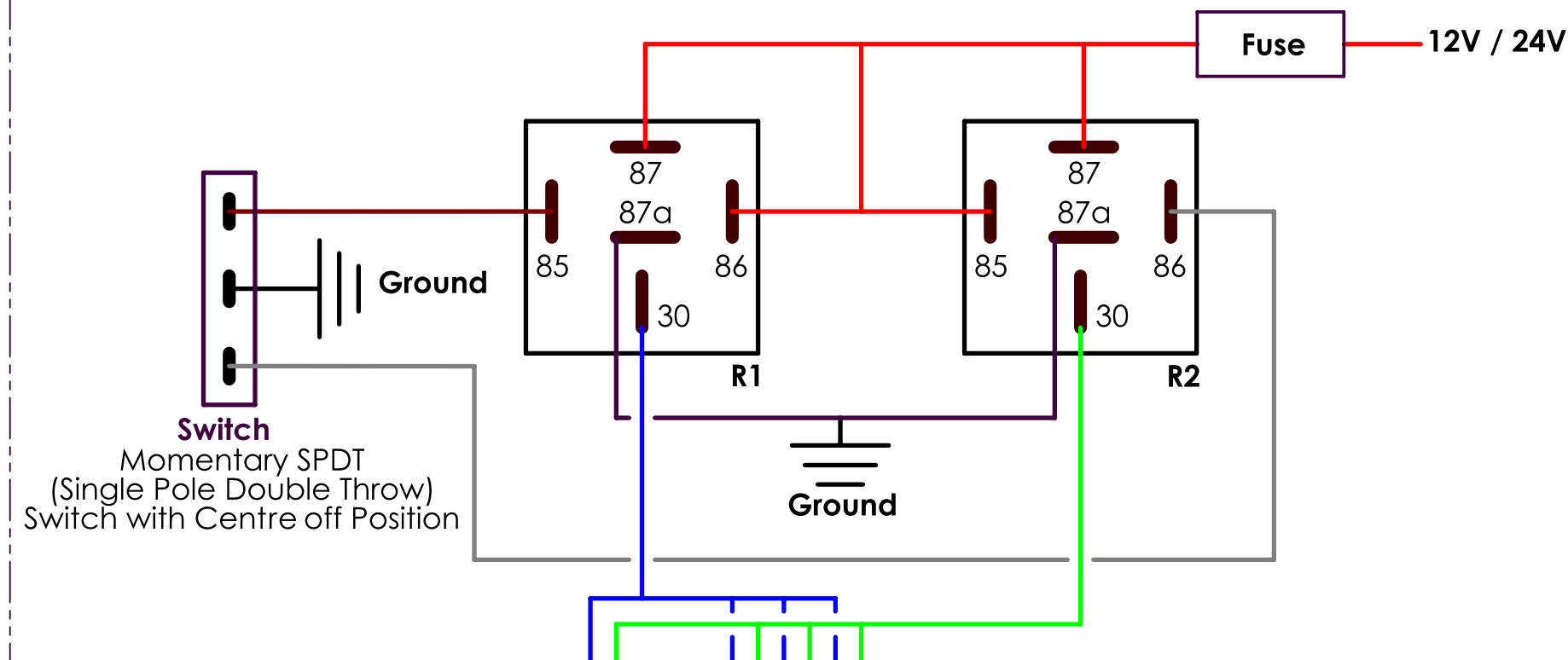


FAST LOCK Wiring

Unlock polarity
Blue wire (+)
Green wire (-)

Lock Polarity
Blue wire (-)
Green wire (+)

In vehicle cabin



SCHEMATIC FOR FAST LOCK V2

SWITCH ACTIVATION

VEHICLE SWITCH SENDS A POSITIVE SIGNAL TO CONTROLLER TO MOVE THE ACTUATORS

Series FL-244 is rated for Multivolt 12 - 24 V.

Key:

R1 = relay 1

R2 = relay 2

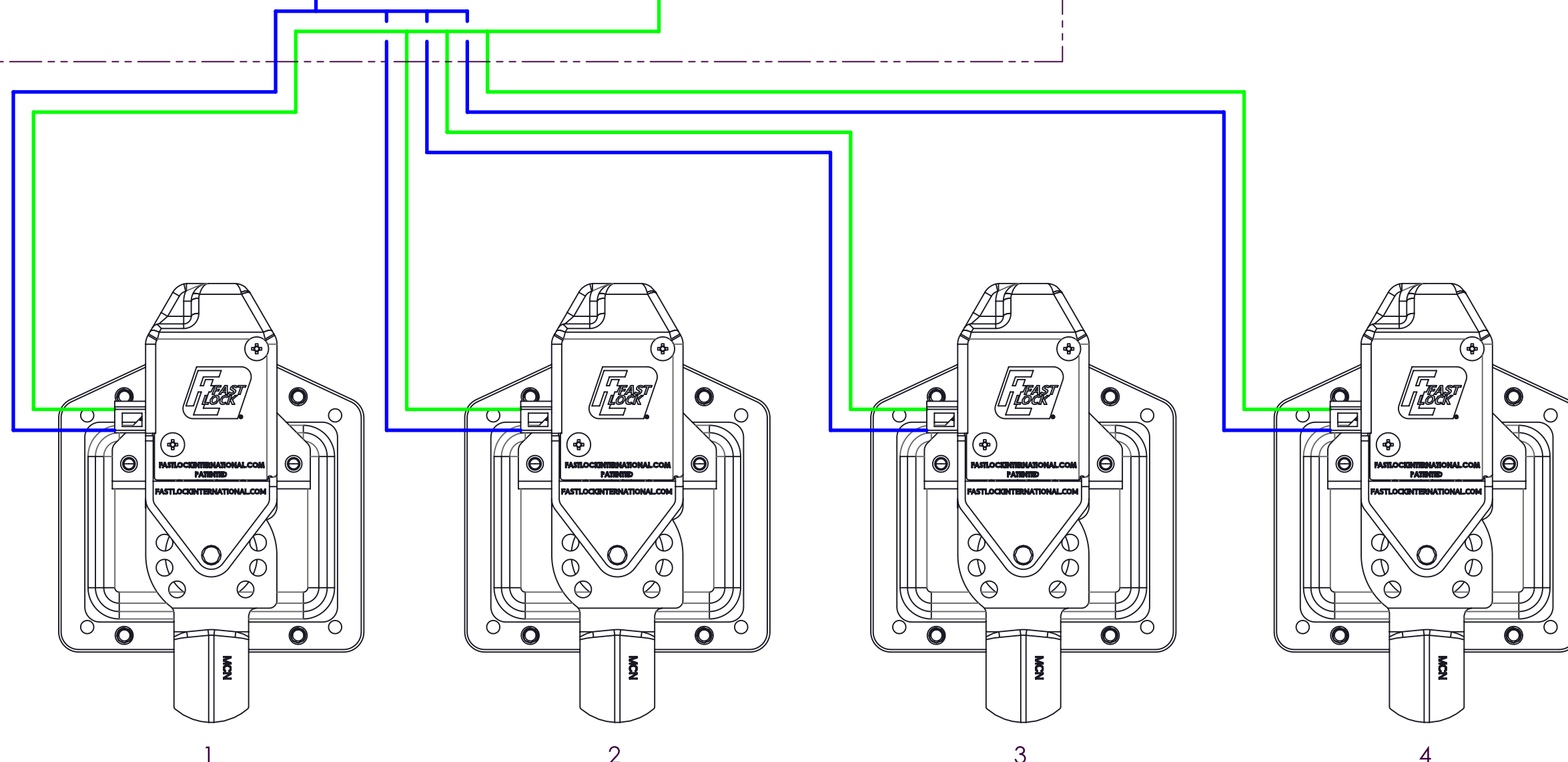
85 = relay coil - switching or control output

86 = relay coil - switching or control output

87 = relay power circuit output NO (Normally Open)

87a = relay power circuit output NC (Normally Closed)

30 = relay power circuit input



FAST LOCK Wiring

Unlock polarity
Blue wire (+)
Green wire (-)

Lock Polarity
Blue wire (-)
Green wire (+)